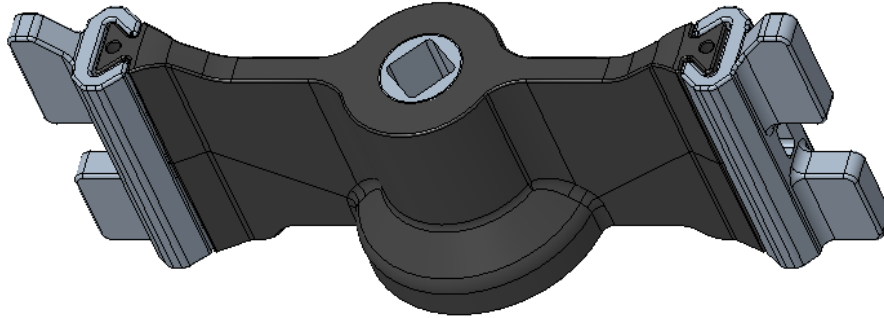


# Radicle Lab Grinder Service

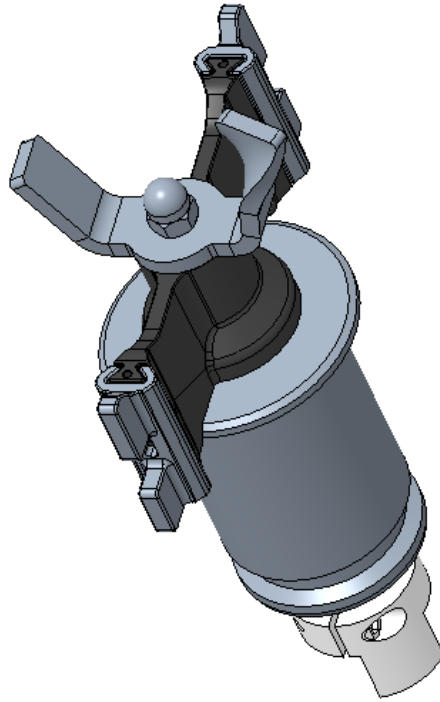
---

## 782085 (BLADE ASM, GRINDER)



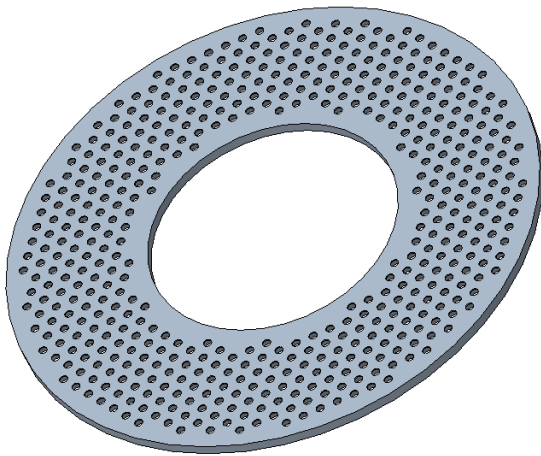
1. Replacement frequency:
  - a. If torn, broken, or tips come off.
  - b. Worn blade – replace if tip-tip measurement (overall width) is less than 3-5/8”.
2. Apply blue Loctite to M6 shaft threads prior to assembling new blade asm.
3. Use 8 mm socket and torque wrench to tighten cap nut to 90 in-lb.
4. Tips:
  - a. Do not need to remove grinder, only open latch and pivot back.
  - b. Wash down extension O-ring all around before relatching grinder bowl.

## 782080 (DRIVE ASM, GRINDER BLADE)

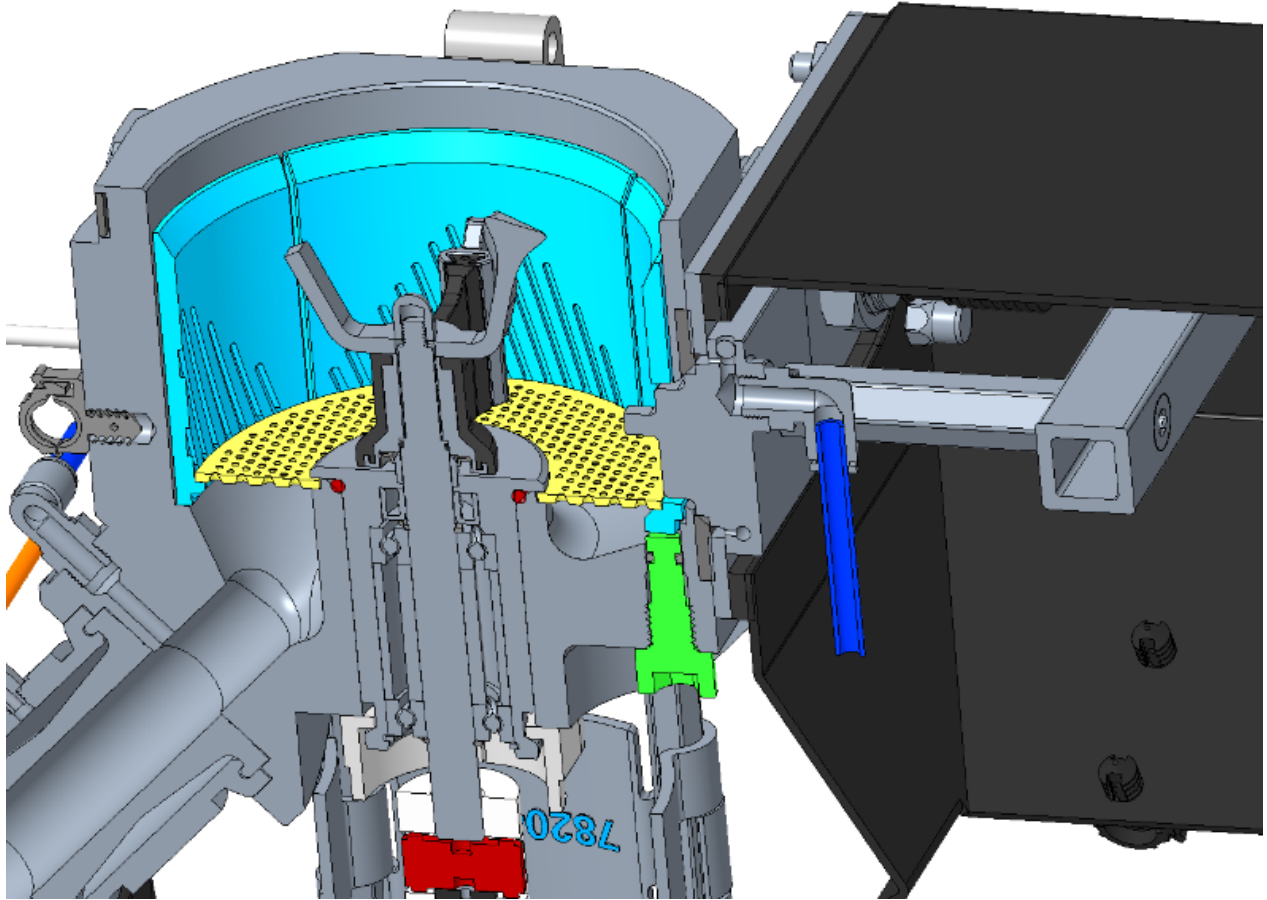


1. Replacement frequency:
  - a. 1x per year OR
  - b. If soil slurry leakage past seal and through bearing asm onto motor
2. When clamping new asm, push down on top of asm and hold clamps up against base of bowl.
3. Tips:
  - a. Do not need to remove grinder, only open latch and pivot back.
  - b. Fold rubber blade up into extension and pull out bottom side first.
  - c. Wash down extension O-ring all around before relatching grinder bowl.

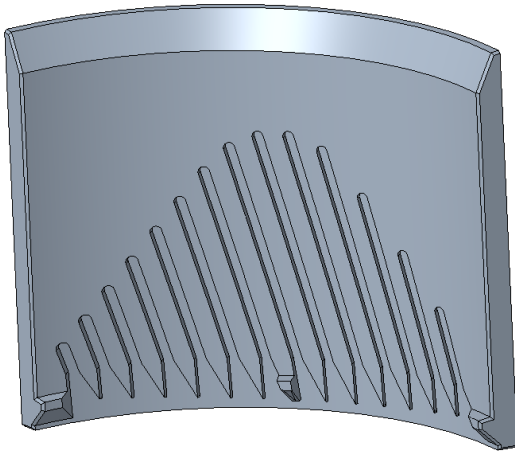
## 782014 (PLATE, BASE SCREEN)



1. Replacement frequency:
  - a. Excessive wear – when two screen holes combine into an oblong hole.
  - b. Example above is severely worn, should have been replaced before this much wear.
2. Replacement instructions:
  - a. Remove grinder blade drive asm – reference the 782080 instructions / tips.
  - b. Screen removal – Method 1 (least intrusive – see image above)
    - i. Use a .050” or 1.5 mm hex L-key and put the small leg through a hole in the screen.
    - ii. Attach a locking pliers to the long end of the L-key and pull the screen out if possible.
    - iii. More likely, a hammer will be needed to tap on the pliers and pull out the screen.
  - c. Screen removal – Method 2 (for stubborn / tight screens and easier removal of wall sections – see image below)
    - i. Remove plug (green below).
    - ii. Use a long 1/8 - 3/16” pin punch and hammer to tap out screen and wall sections.
    - iii. Be careful to not damage threading in the plug port, or any part of the aluminum grinder bowl.
    - iv. Before reinstalling plug, ensure O-ring is not cut or torn – replace if necessary.
      1. Plug asm P/N 782041
      2. O-ring P/N 200728 (-008 size)
  - d. Clean the inside of the grinder bowl before installing or reinstalling parts.
  - e. If wall sections are removed, be sure to center lower pocket in door wall section in its mating protrusion in grinder bowl.



## 782006 & 782007 (WALL, GRINDER SOLID/DOOR)



1. Replacement frequency:
  - a. Excessive wear – if recessed slots are more than halfway washed out.
  - b. Example above is severely worn, should have been replaced before this much wear.
2. Replacement instructions:
  - a. Remove grinder blade drive asm – reference the 782080 instructions / tips.
  - b. Screen and wall section removal – reference the 782014 screen removal instructions.
    - i. If wall sections are bound tightly (which is often the case), Method 2 (punch through grinder plug port) will need to be used.
    - ii. Be careful to not damage threading in the plug port, or any part of the aluminum grinder bowl.
  - c. Clean the inside of the grinder bowl before installing or reinstalling parts.
  - d. When installing wall sections, be sure to center lower pocket in door wall section in its mating protrusion in grinder bowl.